



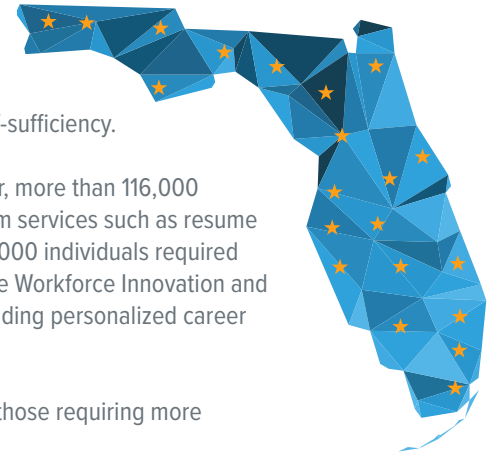
CAREERSOURCE FLORIDA NETWORK IMPACT

All data included is from July 1, 2023 - June 30, 2024 and was provided by FloridaCommerce.

CareerSource Florida is the Governor's designated organization responsible for workforce policy and investment. Through policy guidance, we equip local workforce development boards with the resources they need to support job seekers and businesses on their journey to achieve economic self-sufficiency.

The CareerSource Florida network supports a wide range of job seekers with varying needs. Last year, more than 116,000 individuals received assistance funded by the Wagner-Peyser Act, which provides essential, short-term services such as resume writing and interview preparation to help individuals quickly enter the workforce. However, nearly 15,000 individuals required more intensive support to overcome significant barriers to employment. These services, funded by the Workforce Innovation and Opportunity Act (WIOA), are tailored to each individual and often involve long-term engagement, including personalized career planning, skills training, and connections to community resources.

This dual approach ensures we meet the immediate needs of many while offering deeper support to those requiring more comprehensive assistance to achieve lasting success in the job market.



STATEWIDE WORKFORCE PROGRAM SUPPORT

116,028 Employ Florida participants served

14,634 WIOA Adult, Dislocated Workers, and youth served

\$17,406.54

average annual wage increase for individuals served by the WIOA Adult or Dislocated Worker programs

76.8%

of adults served by the WIOA Adult program obtained an industry-recognized credential

75.2%

of adults served by the WIOA Dislocated Worker program obtained an industry-recognized credential

26,704 of individuals served by the CareerSource Florida network are now off public assistance

76.6% of youth served by the CareerSource Florida network obtained an industry-recognized credential

JOB SEEKER SUPPORT

758,331

Total number of services provided to Employ Florida and WIOA participants

Services to participants included:

365,531

Initial Career Services

Self-service job search assistance

280,041

Individualized Career Services

Resume preparation and interviewing skills workshops

52,958

Training Services

On-the-job training, apprenticeships, and customized employer training

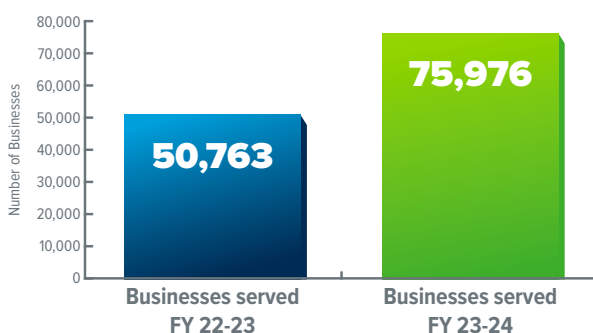
70.4%

of single parents (including single pregnant women) saw a quarterly wage increase

8,781

veterans served

ADVANCING FLORIDA'S BUSINESSES



CareerSource Florida has experienced remarkable growth, serving over 75,000 businesses, which marks nearly a 50% increase compared to the previous year. Our efforts include collaborating with the Education and Industry Consortium to align educational programs with industry needs, maintaining a Master Credentials List to ensure that training programs meet the highest standards, and offering workforce training grants to support new and expanding businesses and their employees. By leaning into partnerships and strengthening connections between all players in the workforce development sphere, we are building a brighter future for Florida's workforce.



CAREERSOURCE FLORIDA NETWORK IMPACT

All data included is from July 1, 2023 - June 30, 2024 and was provided by FloridaCommerce.

LOCAL WORKFORCE PROGRAM SUPPORT



Serving Indian River, St. Lucie, and Martin counties.

4,089 Employ Florida
participants served

332 WIOA Adult, Dislocated Workers,
and youth served

100%

of adults served by the WIOA Dislocated Worker
program obtained an industry-recognized credential

93.5%

of adults served by the WIOA Adult program
obtained an industry-recognized credential

\$33,186.50

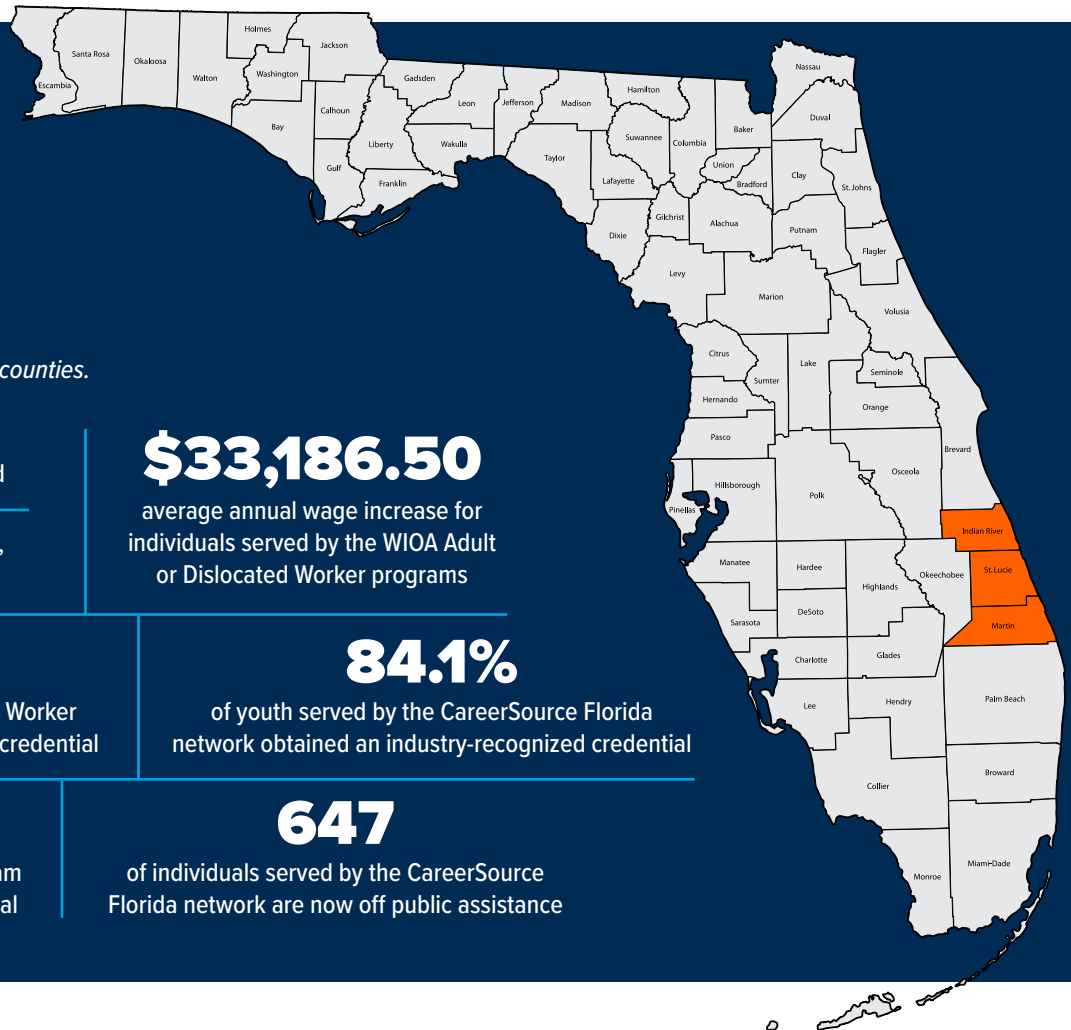
average annual wage increase for
individuals served by the WIOA Adult
or Dislocated Worker programs

84.1%

of youth served by the CareerSource Florida
network obtained an industry-recognized credential

647

of individuals served by the CareerSource
Florida network are now off public assistance



FASTEST GROWING INDUSTRIES IN REGION:

Employment growth rate from 2024 - 2032.

Administrative and Waste Services	14.7%
Professional and Technical Services	12.4%
Management of Companies and Enterprises	12.1%
Real Estate and Rental and Leasing	11.8%
Transportation and Warehousing	11.1%

Source: FloridaCommerce

When I came to CareerSource Research Coast, I was lost, but they showed me how to get myself up and running at the Treasure Coast Food Bank. This is one of the greatest things that CareerSource did for me.

- KATE B., received career guidance and support, helping her find and secure a position at the Treasure Coast Food Bank



SCAN TO
LEARN MORE

careersourceflorida.com

A proud partner of the AmericanJobCenter network

CareerSource Florida is an equal opportunity employer/program. Auxiliary aids and services are available upon request to individuals with disabilities. Disponible en Español.